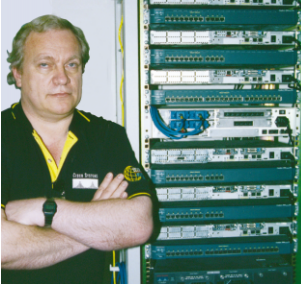


CaseStudy

The ATLAS 550 WAN emulation system is an essential element of Box Hill Institute's CCNA and CCNP education program.

IT EDUCATION

● Box Hill Institute



"The ATLAS 550 WAN Emulation System is an essential part of our instruction for students preparing for the CCNA and CCNP exams. With the introduction of the International WAN Emulation Systems, our students can now receive training for country-specific services utilizing EuroISDN."

Jose Straube
Cisco Networking Academy
Instructor
Box Hill Institute

As the Super Cisco Academy Training Center for CCNA in the Asia Pacific region, Box Hill Institute is recognized for excellence in IT networking education. The Institute has built its reputation on delivering high quality hands-on instruction, which is especially important for Cisco Networking Academy® students who are preparing for their CCNA® and CCNP® certifications.

● ATLAS 550 KEY FOR "REAL WORLD" TRAINING

"There is no doubt that IT networks are increasing in complexity. For this reason, we believe that hands-on education is essential for properly trained IT professionals, especially those seeking CCNA and CCNP certifications," said Jose Straube, Cisco Networking Academy Instructor, Box Hill Institute. "A key element of our programs is the ATLAS 550, which allows us to provide invaluable real-world experience with Layer 1 and Layer 2 of the OSI model."

The ATLAS 550 can emulate a telephone company switch and provide Frame Relay, ISDN, EuroISDN, and analog POTS circuits without the purchase of expensive circuits from local service providers or costly upgrades to existing equipment. Each ATLAS can provide up to 16 ISDN BRI Lines (including EuroISDN), 32 Analog POTS lines, eight Frame Relay circuits, 18 ISDN PRI lines, and 2 EuroISDN PRI Lines.

Although Box Hill Institute originally purchased a single ATLAS 550 system because it was required to teach the CCNP curriculum, it now has six units that are used to create complex network scenarios involving numerous types of connections. Having several systems allows students to test configurations in a timely manner while also allowing for greater flexibility in class schedules.

"The use of multiple ATLAS 550s allows our instructors to create network scenarios of all sizes ranging from small simplistic architectures to large, complex networks", said Straube. "This takes our students' education to the next level and better prepares them for the real world."

About Box Hill Institute

Box Hill Institute is one of Australia's premier multi-purpose TAFE Institutes that prides itself on its ability to deliver a broad range of vocational education and training services. The Institute has four main campuses located in the heart of the Box Hill business district, within easy reach of Melbourne's Central Business District. Box Hill Institute boasts a proud record of innovation in teaching and has outstanding facilities.

Box Hill Institute offers over 400 full-time and part-time courses covering a wide range of subject disciplines and delivery methods, as well as around 300 short courses. All courses provide students with a variety of pathways to employment, promotion and further tertiary study. The Institute has more than 33,000 student enrollments each year with an increasing number coming from overseas.

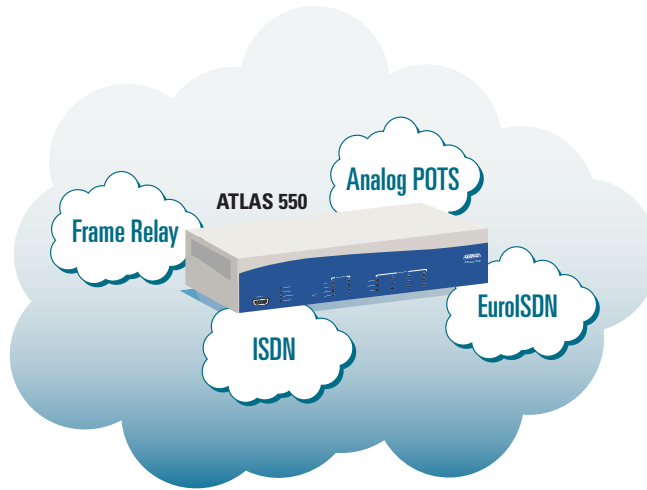
Box Hill Institute is Australia's leading Technical and Further Education (TAFE) provider of tailored national and international quality training services for government and industry.

www.adtran.com

ADTRAN, Inc.
901 Explorer Blvd.
P.O. Box 140000
Huntsville, AL 35814-4000
800 9ADTRAN
info@adtran.com

©2005 ADTRAN, Inc. All rights reserved.
ADTRAN is a registered trademark of ADTRAN, Inc. TSU 120 and TSU 600e are trademarks of ADTRAN, Inc.
Printed in the U.S.A. on recycled paper.
EN565B

ADTRAN[®]



The ATLAS 550 serves as a central office in a box and offers a significant cost advantage when compared to the monthly costs of telephone company circuits.

ABOUT THE CISCO NETWORKING ACADEMY PROGRAM

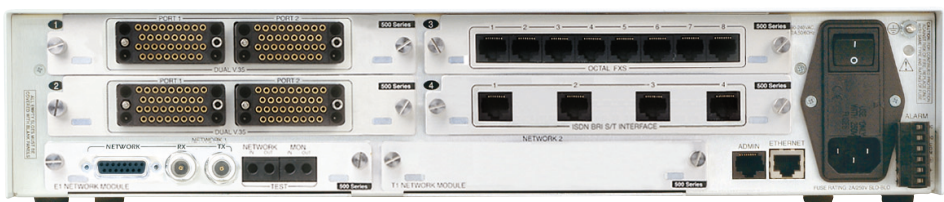
Launched in 1997, the Cisco Networking Academy[®] Program is a comprehensive program designed to teach students in high schools, colleges and universities, technical schools, community-based organizations, and other educational programs around the world.

The Networking Academy program utilizes a blended learning model, integrating face-to-face teaching with a challenging web-based curriculum, hands-on lab exercises, and Internet-based assessment. Academy graduates are prepared for networking and IT-related careers in the public and private sectors, as well as for higher education in engineering, computer science and related fields.

Academies offer a range of courses for a variety of careers in network design and administration, technical support, programming or software engineering, database development and administration, and Web development.

ATLAS 550 FLEXIBILITY

ISDN BRI	1-16 Circuits ('U' or 'S/T')
EuroISDN BRI	1-16 Circuits ('U' or 'S/T')
ISDN PRI	1-18 Circuits
EuroISDN PRI	1-2 Circuits
Frame Relay	1-8 Circuits (500 PVCs)
Analog (POTS)	1-32 Circuits



For more information on the pre-configured ADTRAN ATLAS 550 for WAN emulation, contact SIGMA^{net}, the sole source provider of ATLAS 550 equipment to Networking Academies worldwide, at AcademyOrders@SIGMA^{net}.com or 1-866-554-5535.

SIGMA^{net}[®]