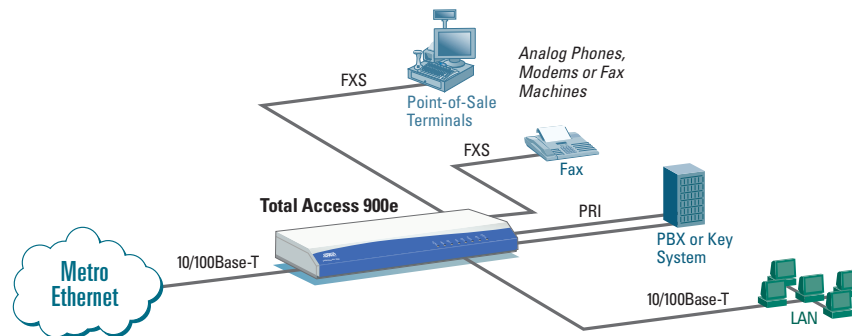


Delivering Hosted VoIP over Metro Ethernet



Hosted IP Centrex does not need to be limited to traditional WAN connections (T1, ADSL, DS3, etc...). The Total Access® 900e series provides the ability to use one of its 2 integrated 10/100Base-T Ethernet ports as a WAN facing. This allows for converged access deliver over advanced services such as Metro Ethernet while still maintaining a separate Ethernet port for customer connectivity to support both data and SIP VoIP connections.

The Total Access 900 Series is ideal for providing the PRI ports or analog ports necessary to support a customer's remaining analog phones, fax machines, alarm systems and modems. The integrated SIP gateway and advanced quality of service mechanisms allows the Total Access 900 Series to deliver voice service to IP phones and traditional telephony equipment simultaneously. In addition, the unit's ability to act as a backup SIP registrar for IP phones and as a Back-to-Back User Agent (B2BUA) help to facilitate remote survivability.

The Total Access 900 Series offers a single T1 network interface, while the Total Access 900e Series offers up to 4 T1s. User interfaces include up to 24 FXS ports for analog voice delivery, an integrated DSX-1 port for PBX connectivity, and a 10/100Base-T Ethernet interface for access to the 900/900e's router.

| Description | ADTRAN Part Number |
|-------------------|--------------------|
| Total Access 904 | 4212904L1 |
| Total Access 908 | 4212908L1 |
| Total Access 912 | 4212912L1 |
| Total Access 916 | 4212916L1 |
| Total Access 924 | 4212924L1 |
| Total Access 908e | 4242908L1 |
| Total Access 916e | 4242916L1 |
| Total Access 924e | 4242924L1 |

SOLUTION FEATURES

- Seamless voice and data integration over VoIPbased network architectures
- Compatible with industry leading soft switches and call agents
- Up to 24 analog POTS interfaces
- DSX-1 for PBX connectivity
- Dynamic bandwidth allocation affords more efficient utilization
- Integral full-featured IP router for data support and Internet access (Dual 10/100Base-T ports on 900e series)
- Stateful inspection firewall for network security
- Quality of Service (QoS) for delay sensitive traffic like VoIP
- Space-savings, equipment consolidation
- Simplified network administration
- Familiar Command Line Interface
- Web-based GUI
- Industry-leading ten-year warranty



ADTRAN is an ISO 9001, ISO 14001 and a TL 9000 certified supplier.

ADTRAN and Total Access are registered trademarks of ADTRAN, Inc. All other registered trademarks and trademarks mentioned in this publication are the property of their respective owners.

Printed in the U.S.A. on recycled paper.
Copyright © 2008 ADTRAN, Inc. All rights reserved.
EN934B July 2008